

Realignment of Grades 1 – 8 for the 2022/2023 School Year

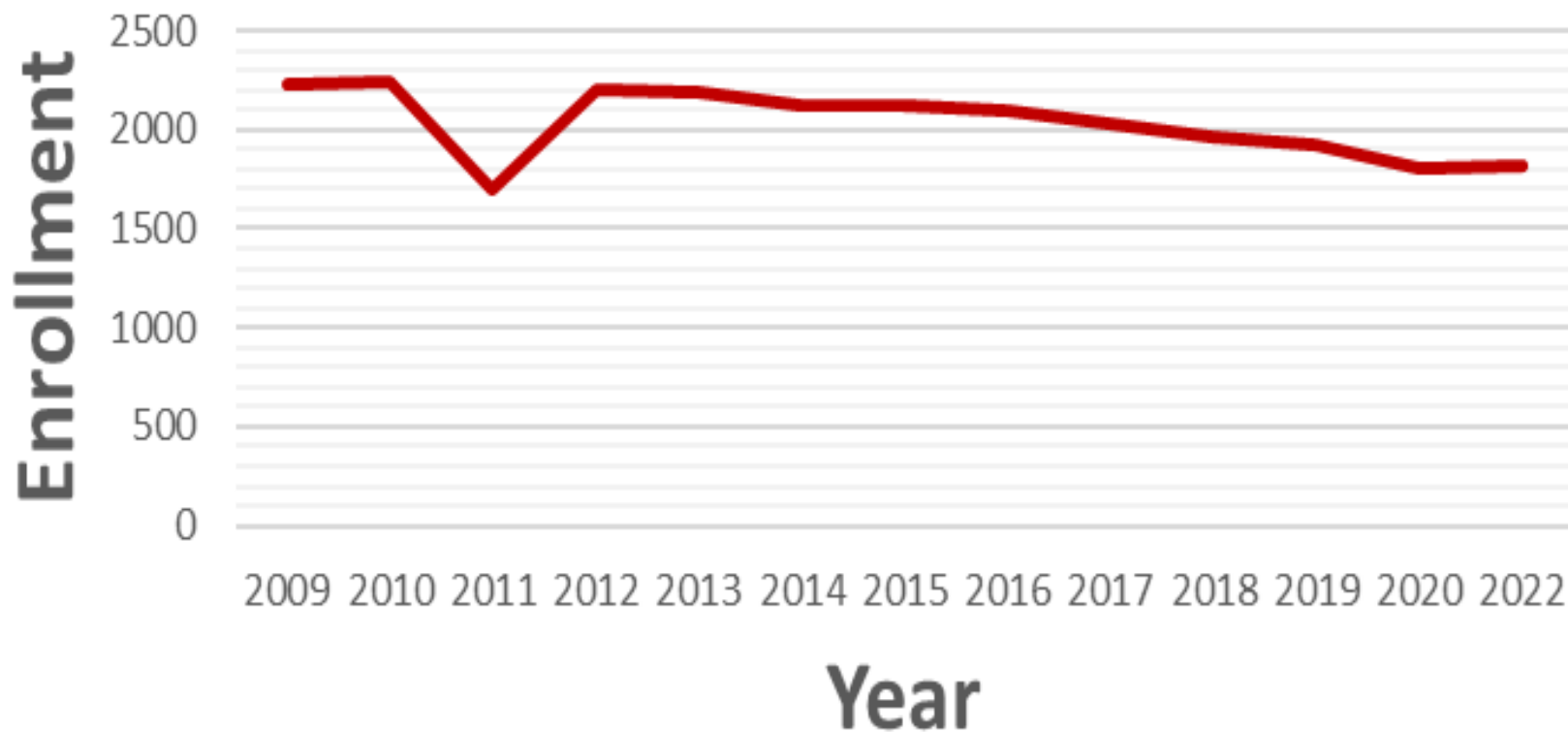
**Key Communicators Meeting
February 15, 2022**

Our Presenters

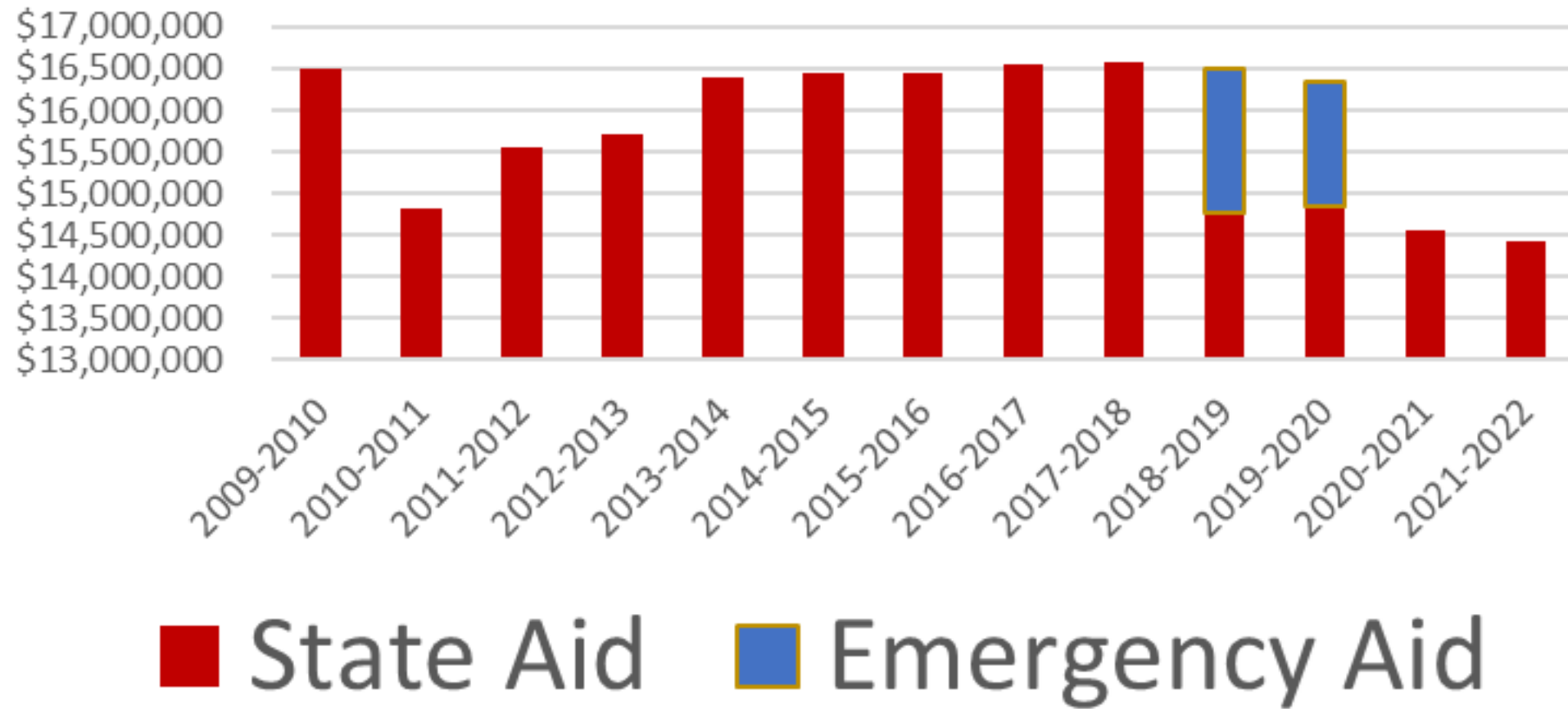
- Dr. Mark Silverstein, Superintendent
- Mr. George Duthie, District Architect
- Dr. Robert Preston, Chief Academic Officer
- Principal Kelly Marchese, Bullock School
- Principal Craig Stephenson, Bowe School

Enrollment Trends - School Profile

State Snapshot Reports - October



Decline in State Aid



Strategic Planning Process



Identified an objective of optimizing district space to reflect declining enrollment trends and reduced state aid

GIS Sale and Bowe Renovation Planning Approval



Glassboro Public Schools Key Communicators Meeting February 2022

District Architect George Duthie

Consolidation/Re-Configuration

Glassboro Public Schools Key Communicators Update
February 2022



1- Strategic Plan Five Year Update

Five Year Update Completed- Valuable and Diverse Feedback from Numerous Stakeholders

GOAL Area: Facilities/Finance

GOAL 3: Create a safe and secure learning environment equipped to deliver educational programs that will prepare our students for the future

Objectives:

- 1- Optimize District Space in Light of Declining Enrollments
- 2- Upgrade Classrooms and Other Spaces
- 3- Enhance Technology
- 4- Upgrade Infra-Structure
- 5- Explore Alternative Funding Methods for Facilities Projects



2- Strategic Plan Objective- 'Right Size'

The district has recognized that due to a declining enrollment trend there is now more space than needed in district school buildings.

The district intends to 'right size' its facilities and obtain operational and functional efficiencies.

The details of the districts enrollments and utilization/consolidation plan are shown on the following slides.



SUMMARY OF UTILIZATION/CONSOLIDATION STUDY

EXISTING CAPACITY SUMMARY BASED ON ENROLLMENTS

SCHOOL	October 15, 2021 ENROLLMENT	CURRENT TARGET CAPACITY (19 PK/K, 20 students/ES,IS, HS)	EXCESS CAPACITY- # of students
JH Rodgers School	240	350	149
Dorothy Bullock ES	379	680	293
Thomas Bowe ES	409	480	63
Glassboro IS	267	380	85
Glassboro HS	523	560	13
Total Enrollment	1,818	2,450	603

EXISTING



Glassboro Public Schools Key Communicators Meeting February 2022



SUMMARY OF UTILIZATION/CONSOLIDATION STUDY

NEW CONFIGURATION

SCHOOL	EXISTING CONFIGURATION	NEW CONFIGURATION
JH Rodgers School	PK – K	PK – K
Dorothy Bullock ES	1 - 3	1 - 5
Thomas Bowe ES	4 - 6	6 - 8
Glassboro Intermediate	7 - 8	NA
Glassboro High School	9 - 12	9 - 12

NEW



Glassboro Public Schools Key Communicators Meeting February 2022



SUMMARY OF UTILIZATION/CONSOLIDATION STUDY

CAPACITY SUMMARY BASED ON CURRENT ENROLLMENTS W/NEW CONFIGURATION

SCHOOL	October 15, 2021 ENROLLMENT	CURRENT TARGET CAPACITY (19 PK/K, 20 students/ES,IS, HS)	EXCESS CAPACITY- # of students
JH Rodgers School	240	347	146
Dorothy Bullock ES Gr 1 - 5	379	680	11
Thomas Bowe ES Gr 6 - 8	409	483	53
Glassboro Intermediate	267	0	0
Glassboro High School	523	588	41
Total Enrollment	1,818	2,098	251

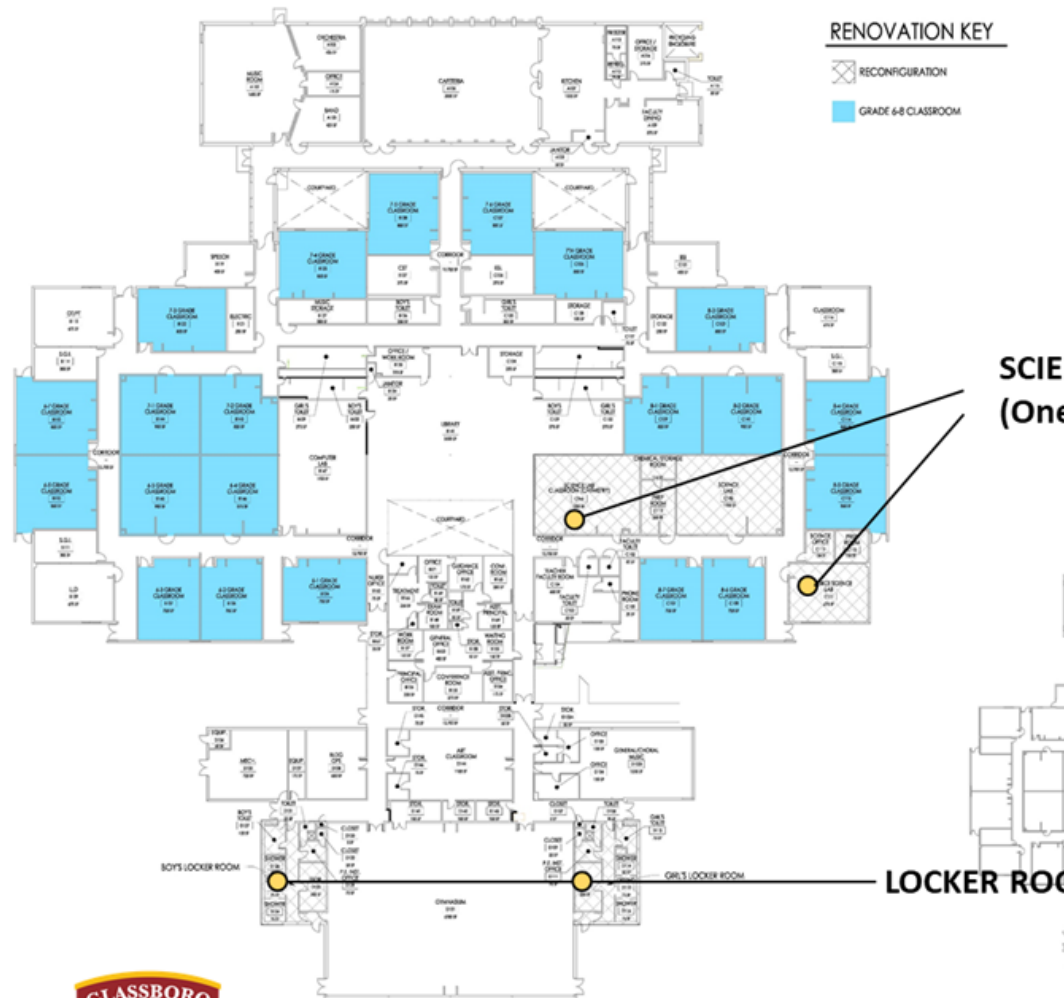
NEW



Glassboro Public Schools Key Communicators Meeting February 2022



PRELIMINARY CONSTRUCTION COSTS- Bowe ES



This plan represents the planned renovations to convert Bowe School to a Middle School. Renovations include three new science labs and locker rooms.

Estimated Project Cost
\$3,390,000.

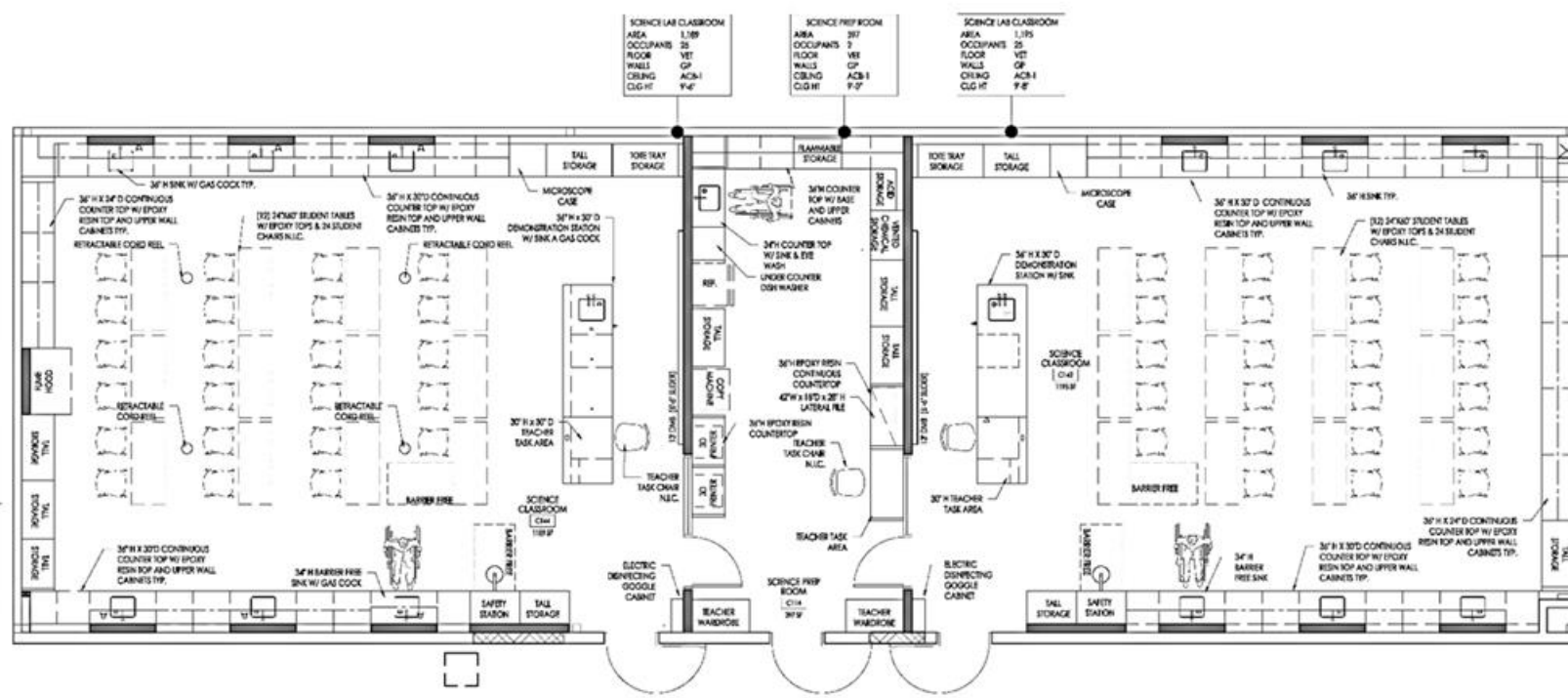


Glassboro Public Schools Key Communicators Meeting February 2022

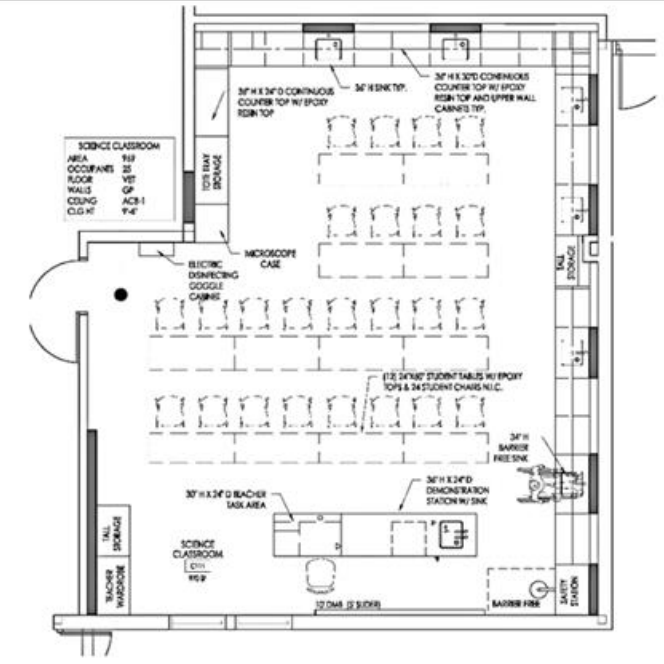


SUMMARY OF UTILIZATION/CONSOLIDATION STUDY

NEW SCIENCE LAB CLASSROOMS



1 ROOM LAYOUT - SCIENCE CLASSROOM C144, PREP ROOM C114 & SCIENCE CLASSROOM C142
Scale: 1/4" = 1'-0"



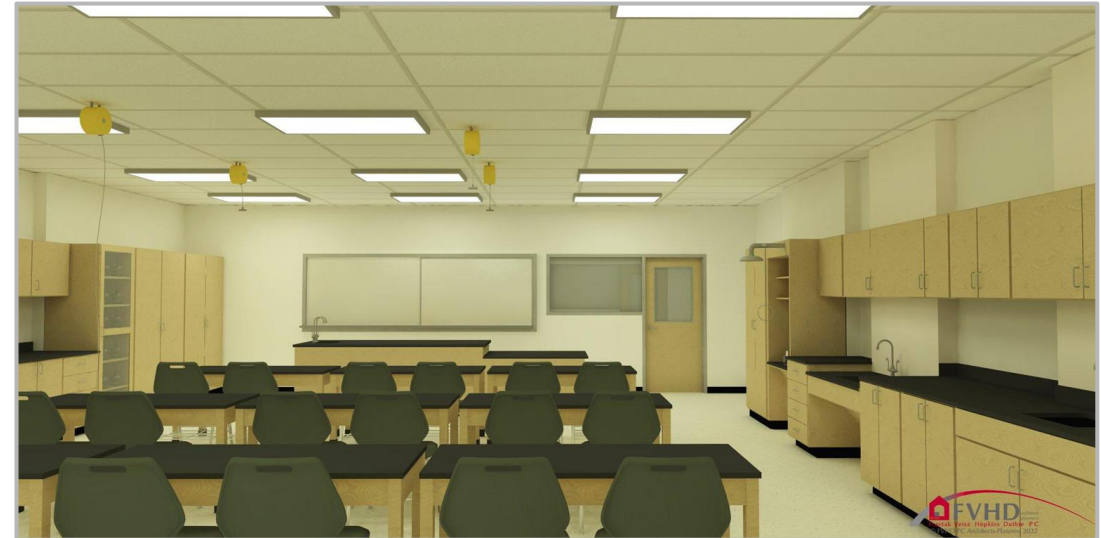
2 ROOM LAYOUT - SCIENCE CLASSROOM C111
Scale: 1/4" = 1'-0"



Glassboro Public Schools Key Communicators Meeting February 2022



RENDERING OF NEW SCIENCE LAB/STEM CLASSROOM

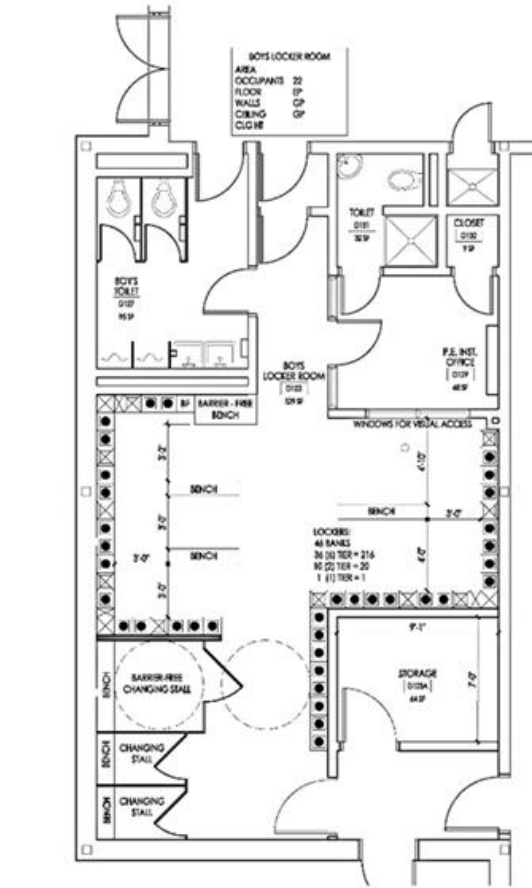


Glassboro Public Schools Key Communicators Meeting February 2022

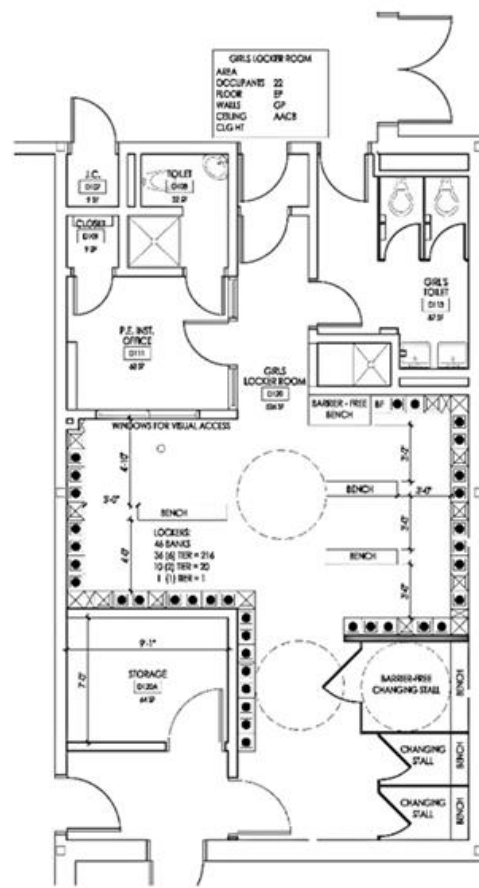


SUMMARY OF UTILIZATION/CONSOLIDATION STUDY

NEW LOCKER ROOM RENOVATIONS



3 ROOM LAYOUT - BOYS' LOCKER ROOM D123
Scale: 1/4" = 1'-0"



4 ROOM LAYOUT - GIRLS' LOCKER ROOM D123
Scale: 1/4" = 1'-0"



New Configuration Frequently Asked Questions

When will this plan be implemented?

The district plans to implement the closure of the Intermediate School and re-configuration of the remaining schools for the 2022-2023 school year.

How will the cost be funded?

The cost of the project will be funded through the sale of the Intermediate School (we have executed the agreement of sale).

When will construction be completed?

We plan to complete construction by the start of the new school year. However, supply chain and labor challenges may affect this schedule. We are developing a contingency plan in the event that the project is not completed by then.



THOMAS BOWE SCHOOL RENOVATIONS- Anticipated Schedule

EVENT	DATE(S)
NJDOE Approvals Obtained COMPLETED!!	February 2022
Project Bidding IN PROGRESS!!	February 2022
Project Award	March 2022
Procurement	April 2022 – June 2022
Start Construction	June 2022
Complete Construction	August 2022
Occupy Schools in New Configuration	September 2022
Complete Thomas Bowe Renovations (Late Date in the Event of Supply Chain or Other Issues- Current Construction Climate is Challenging)	December 2022



Glassboro Public Schools Key Communicators Meeting February 2022



Dr. Robert Preston

Chief Academic Officer

Bell Schedule:

- The alignment of Glassboro High School and Bowe Middle School arrival/dismissal times will allow for shared transportation routes and correspondence with after-school activities such as athletics, fine and performing arts, and shared discipline initiatives.
- Compatible Bullock and Rodgers arrival/dismissal times will allow for optimized transportation routes. This will also allow for GHS and Bowe students to meet their siblings from Bullock and Rodgers at the bus stop.

Academic Programming

- Our new schedule will allow for the adoption of AVID at Glassboro High School and Bowe Middle School.
- Consolidation allows for consideration of additional electives at Bowe Middle School (creative writing, journalism, financial math, culinary arts, and fine and performing arts).
- Updated Academic Programming will allow for expansion of electives at GHS (poetry, creative writing, student tech lab, and Mandarin are just a few of the proposed courses).

Strategic Plan Alignment

The new Academic Program Plan aligns with our District Strategic Action Plan, which includes:

- Enhanced media center/maker space centers at the secondary level.
- Exploration of CAD, Coding, and STEAM options at the elementary level.
- Expansion of enrichment opportunities at elementary level to more students.

Dorothy L. Bullock School Principal Kelly Ann Marchese

Upgrades to Bullock School

- We will be welcoming grades 1 to 5 in our school community
- Adding a playground to the first and second grade side of the building
- Moving the playground from Bowe School to the New Street Park side of the building along with soccer nets for the field area
- Class sizes: 22- 23

After School Clubs and Sports

- Student Council
- Renaissance
- Choir/ Band/ Orchestra
- World Cultures Club
- Bullock Garden Club
- 5th grade Fall Cross Country
- 5th grade Spring Track and Field

Student Recognition Programs

- Star Student Recognition
- Principal's List Breakfast
- Renaissance Rewards



Current DLB Projects

- Finalization of DLB Schedule
- Revision of Discipline Code
- Initiation of DLB Student Council Program
- In the Process of Hiring an Assistant Principal



Bowe Principal Craig Stephenson

TEB Athletics & Extra-curricular Programs

Athletics

- Cross Country
- Field Hockey
- Basketball
- Spring Track

Extra-curricular

- Choir/Band/Orchestra
- Student Council
- LGBG/Building Men
- Math Counts
- Paws for a Cause
- And More



TEB Student Ambassador Program

- Eligibility: 7th & 8th grade students
- Application process/Staff recommendation
- Students of character who are strong representatives of TEB
- Summer training program
- Summer transition camp; Welcoming transfers
- BTS Night; Additional school-wide events/programs



TEB Student Recognition Programs

- Principal's List & Honor Roll
- Bulldog of Character Recognition
- National Junior Honor Society (NJHS)
- Renaissance



Current TEB Projects

- Finalization of TEB Schedule
- Revision of Discipline Code
- Initiation of TEB Student Council Program
- Implementation of Student Ambassador Program
- Visitations to AVID program sites



Questions?